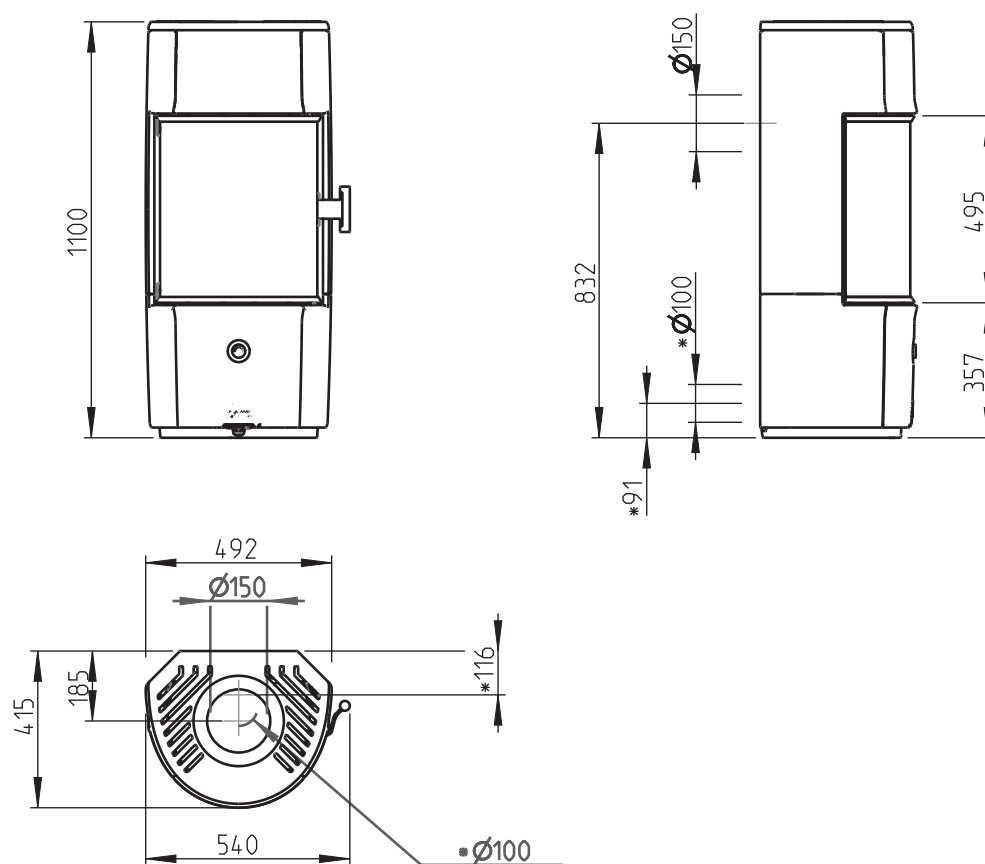
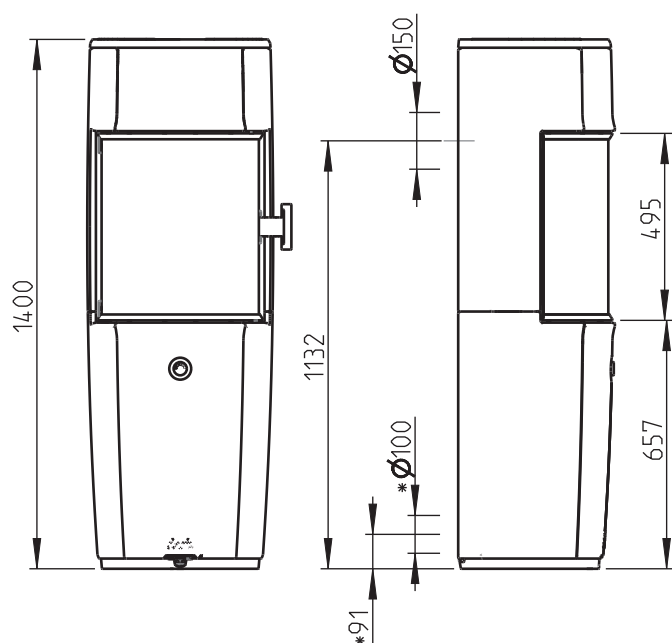


## DIMENSIONS

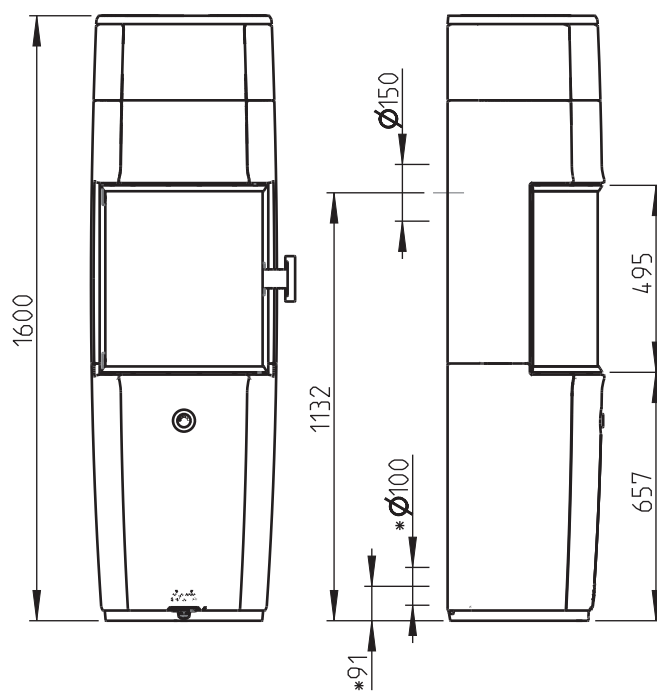
### Jøtul F 171 Zensoric



### Jøtul F 174 Zensoric



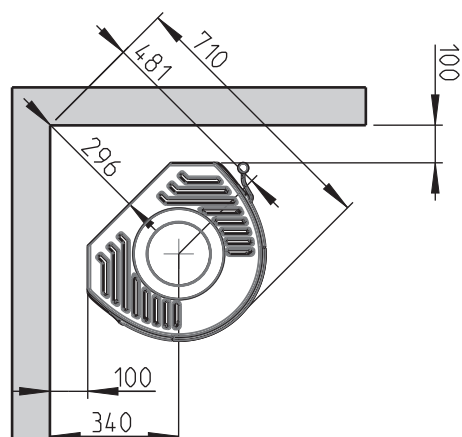
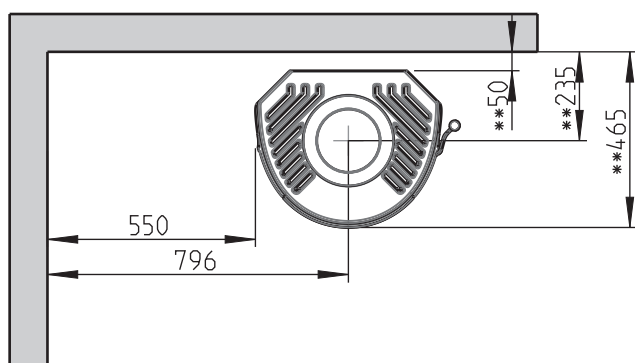
### Jøtul F 176 Zensoric



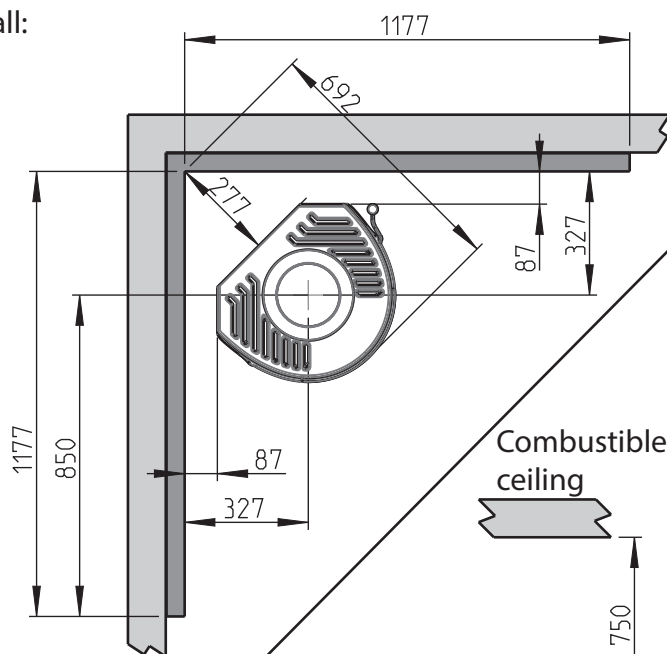
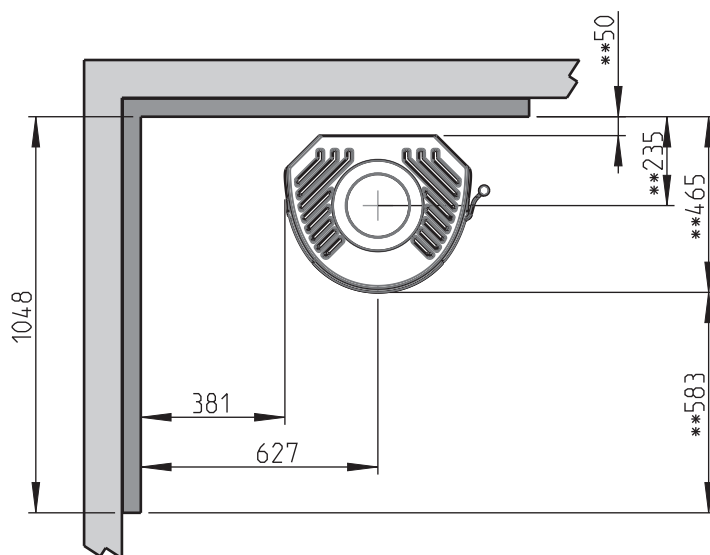
\*Outside air connection  $\varnothing 100$ mm

Placement terms (minimum distances) for:  
 Jøtul F 171 Zensoric, Jøtul F 174 Zensoric and Jøtul F 176 Zensoric

Combustible wall:



Fire wall:



Combustible ceiling

Minimum 750

\*\*With semi-insulated flue pipe down to the top of the stove. The safety distances for the chimney and the flue pipe must be kept!

Combustible wall:

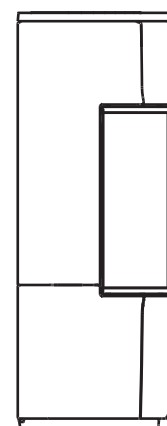
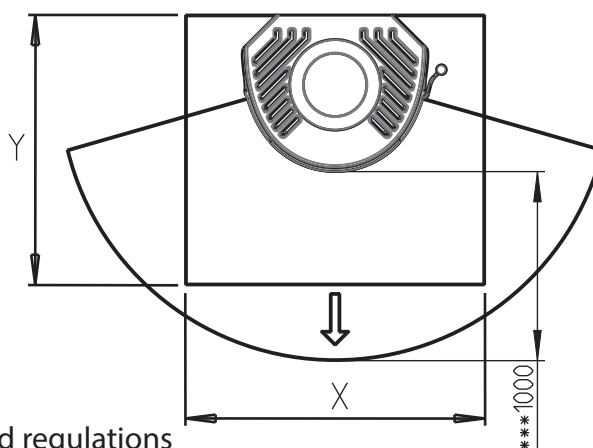


Firewall:



Eg. 50mm Jøtul Firewall.  
 110mm refractory brick or material with similar refractoriness and insulation properties.

Floor Plate



X/Y = According to national laws and regulations

\*\*\*minimum distance to furniture/combustible material